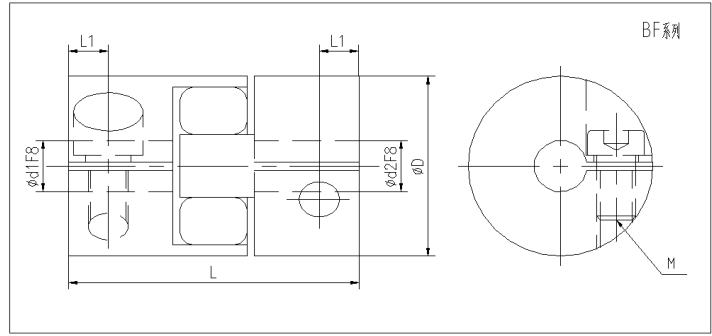


# HIGERS<sup>®</sup>

## 联轴器选型篇



**BF 系列 弹性联轴器**  
BF Series flexible coupling



BF系列轴套材料为：铝合金  
中间体材料为：聚胺脂

Body Material : Aluminum Alloy  
Sleeve material : polyurethane

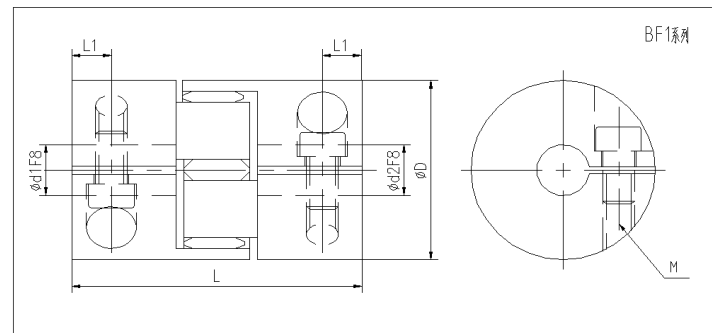
项目类型 Item type	d1 Bore	d2 Bore	D	L	L1	M	额定扭矩 Rated Torque (N.m)	最大扭矩 Max. Torque (N.m)	偏心误差 eccentricity error (m.m)	轴角偏角 Shaft angel	最高转速 Max. Rotational (rpm)	运转 Rated
BF	4-6	4-6	14	22	3	M3	1.5N.m	3N.m	±0.2mm	1°	10000	
BF	5-8	5-8	20	34	5.5	M3	1.5N.m	3N.m	±0.2mm	1°	76000	同步运转 In-phase operate
BF	5-10	5-10	25	34	5.5	M3	2N.m	5N.m	±0.2mm	1°	6500	
BF	5-15	5-15	30	42	5.5	M4	4N.m	6N.m	±0.2mm	1°	5100	

(定货范例 ordering example) BF-10x10-D25L34

(用户端孔径 bore size on user's end) d1  
(用户端孔径 bore size on user's end) d2

(联轴器总长 total length of the coupling) L  
(联轴器最大外径 Max. housing diameter of coupling) D

**BF1系列 弹性联轴器**  
BF1 Series flexible coupling



BF1系列轴套材料为：铝合金  
中间体材料为：聚胺脂

Body material : Aluminum Alloy  
Sleeve material : polyurethane

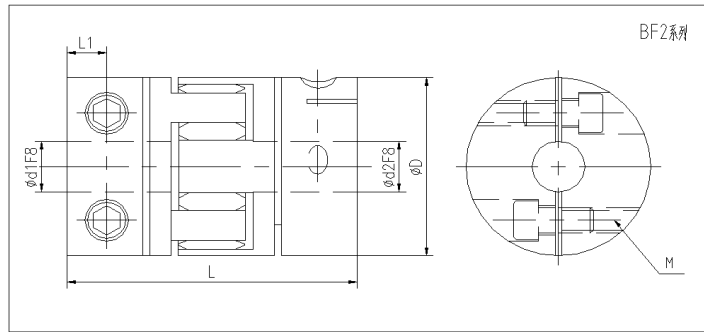
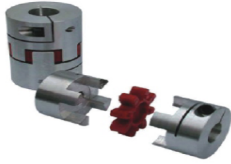
项目类型 Item type	d1 Bore	d2 Bore	D	L	L1	M	额定扭矩 Rated Torque (N.m)	最大扭矩 Max. Torque (N.m)	偏心误差 eccentricity error (m.m)	轴角偏角 Shaft angel	最高转速 Max. Rotational (rpm)	运转 Rated
BF1	8-22	8-22	40	66	9	M5	10N.m	20N.m	±0.2mm	1°	9100	同步运转 In-phase operate
BF1	8-22	8-22	45	66	9	M6	25N.m	50N.m	±0.2mm	1°	9000	

(定货范例 ordering example) BF1-15x15-D40L66

(用户端孔径 bore size on user's end) d1  
(用户端孔径 bore size on user's end) d2

(联轴器总长 total length of the coupling) L  
(联轴器最大外径 Max. housing diameter of coupling) D

**BF2系列 弹性联轴器**  
BF2Series flexible coupling



BF2系列轴套材料为：铝合金  
中间体材料为：聚胺脂

Body Material : Aluminum Alloy  
Sleeve material : polyurethane

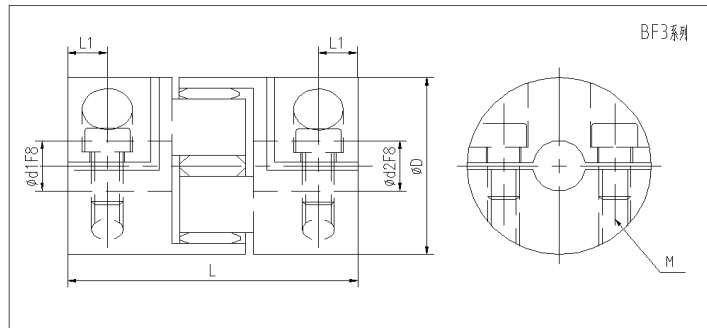
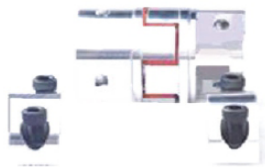
项目类型 Item type	d1 Bore	d2 Bore	D	L	L1	M	额定扭矩 Rated Torque (N.m)	最大扭矩 Max. Torque (N.m)	偏心误差 eccentricity error (m.m)	轴角偏角 Shaft angel	最高转速 Max. Rotational (rpm)	运转 Rated
BF2	12-24	12-24	55	78	10.5	M6	35N.m	70N.m	±0.2mm	1°	7600	
BF2	15-28	15-28	65	90	13	M8	95N.m	190N.m	±0.2mm	1°	6000	同步运转
BF2	18-40	18-40	80	114	15	M10	130N.m	260N.m	±0.2mm	1°	4500	In-phase operate
BF2	30-55	30-55	95	126	18	M10	220N.m	440N.m	±0.2mm	1°	3800	
	30-62	30-62	105	140	21	M12	360N.m	720N.m	±0.2mm	1°	3600	

(定货范例 ordering example) BF2-20x20-D65L90

(用户端孔径 bore size on user's end) d1  
(用户端孔径 bore size on user's end) d2

(联轴器总长 total length of the coupling) L  
(联轴器最大外径 Max. housing diameter of coupling) D

**BF3系列 弹性联轴器**  
BF3Series flexible coupling



BF3系列轴套材料为：铝合金  
中间体材料为：聚胺脂

Body Material : Aluminum Alloy  
Sleeve material : polyurethane

项目类型 Item type	d1 Bore	d2 Bore	D	L	L1	M	额定扭矩 Rated Torque (N.m)	最大扭矩 Max. Torque (N.m)	偏心误差 eccentricity error (m.m)	轴角偏角 Shaft angel	最高转速 Max. Rotational (rpm)	运转 Rated
BF3	4-6	4-6	14	22	3	M3	1.5N.m	3N.m	±0.2mm	1°	6500	
BF3	5-8	5-8	20	34	5.5	M3	1.5N.m	3N.m	±0.2mm	1°	6500	
BF3	5-10	5-10	25	34	5.5	M3	2N.m	4N.m	±0.2mm	1°	6500	
BF3	5-15	5-15	30	42	5.5	M4	4N.m	8N.m	±0.2mm	1°	6500	同步运转
BF3	8-18	8-18	40	66	9	M5	8N.m	16N.m	±0.2mm	1°	5100	In-phase operate
BF3	12-24	12-24	55	78	10.5	M6	33N.m	66N.m	±0.2mm	1°	3800	
BF3	15-28	15-28	65	90	13	M8	90N.m	180N.m	±0.2mm	1°	3800	
BF3	18-40	18-40	80	114	15	M10	110N.m	220N.m	±0.2mm	1°	3000	

(定货范例 ordering example) BF3-10x10-D25L34

(用户端孔径 bore size on user's end) d1  
(用户端孔径 bore size on user's end) d2

(联轴器总长 total length of the coupling) L  
(联轴器最大外径 Max. housing diameter of coupling) D

滚珠丝杠系列

直线导轨系列

支撑座系列

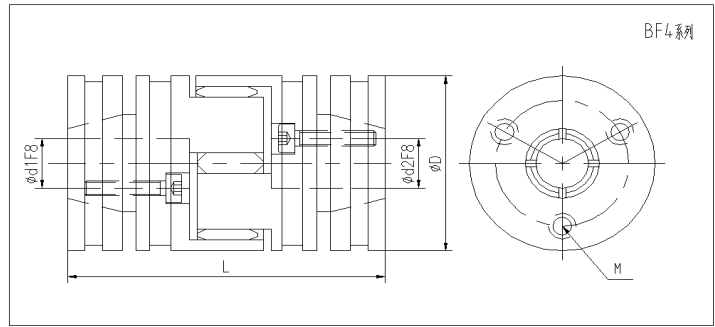
联轴器系列

直线轴承系列

铝制箱

直线光轴系列

## BF4系列 弹性联轴器 BF4Series flexible coupling



BF4系列轴套材料为：铝合金  
中间体材料为：聚胺脂

Body Material : Aluminum Alloy  
Sleeve material : polyurethane

项目类型 Item type	d1 Bore	d2 Bore	D	L	L1	M	额定扭矩 Rated Torque (N.m)	最大扭矩 Max. Torque (N.m)	偏心误差 eccentricity error (m.m)	轴角偏角 Shaft angel	最高转速 Max. Rotational (rpm)	运转 Rated
BF4	8-18	8-18	40	66	9	M4	15N.m	30N.m	±0.2mm	1°	3800	
BF4	12-24	12-24	55	77	10	M5	40N.m	40N.m	±0.2mm	1°	3800	同步运转
BF4	15-28	15-28	65	90	13	M6	100N.m	100N.m	±0.2mm	1°	3800	In-phase operate
BF4	18-40	18-40	80	114	15	M8	140N.m	140N.m	±0.2mm	1°	3800	

(定货范例 ordering example) BF4-20x20-D40L66

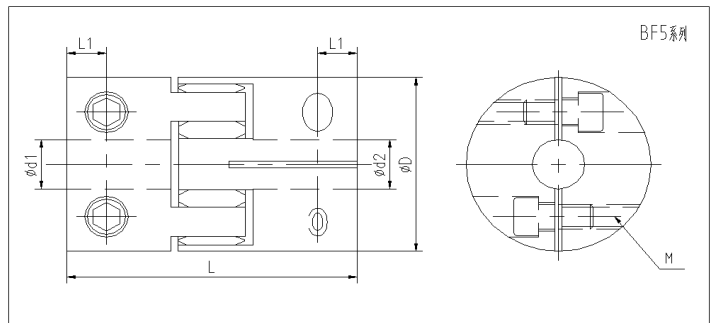
(用户端孔径 bore size on user's end) d1

(联轴器总长 total length of the coupling) L

(用户端孔径 bore size on user's end) d2

(联轴器最大外径 Max. housing diameter of coupling) D

## BF5系列 弹性联轴器 BF5Series flexible coupling



BF5系列轴套材料为：铝合金  
中间体材料为：聚胺脂

Body material : Aluminum Alloy  
Sleeve material : polyurethane

项目类型 Item type	d1 Bore	d2 Bore	D	L	L1	M	额定扭矩 Rated Torque (N.m)	最大扭矩 Max. Torque (N.m)	偏心误差 eccentricity error (m.m)	轴角偏角 Shaft angel	最高转速 Max. Rotational (rpm)	运转 Rated
BF5	4-6	4-6	14	18	2.5	2	1.5N.m	3N.m	±0.1mm	1°	6500	
BF5	5-8	5-8	20	24	3.5	2.5	1.5N.m	3N.m	±0.1mm	1°	6500	
BF5	5-10	5-10	25	26	3.5	3	2N.m	4N.m	±0.1mm	1°	6500	
BF5	5-15	5-15	30	32	5	4	4N.m	8N.m	±0.1mm	1°	6500	同步运转
BF5	8-20	8-20	40	50	8	5	8N.m	16N.m	±0.1mm	1°	5100	In-phase operate
BF5	12-22	12-22	45	50	8	6	9N.m	18N.m	±0.1mm	1°	5100	
BF5	12-24	12-24	55	54	8	6	33N.m	66N.m	±0.1mm	1°	3800	
BF5	15-28	15-28	65	62	9	8	90N.m	180N.m	±0.1mm	1°	3800	
	18-40	18-40	80	76	10	10	110N.m	220N.m	±0.1mm	1°	3800	

(定货范例 ordering example) BF5-20x20-D40L66

(用户端孔径 bore size on user's end) d1

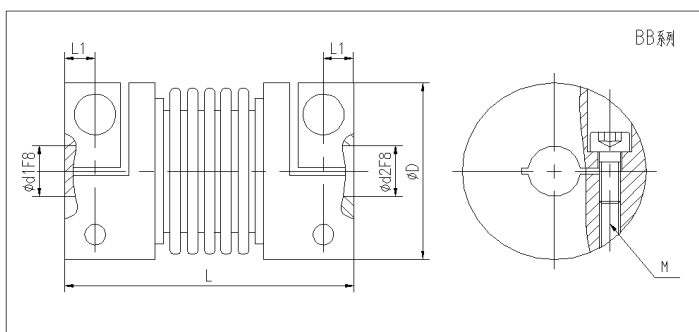
(联轴器总长 total length of the coupling) L

(用户端孔径 bore size on user's end) d2

(联轴器最大外径 Max. housing diameter of coupling) D



**BB 系列 弹性联轴器**  
BB Series flexible coupling



BB系列轴套材料为：硬质铝合金  
中间体材料为：全不锈钢波纹管

Body materia : Hard Aluminum alloy  
Sleeve matenal : Stainless steelbellows

项目类型 Item type	d1 Bore	d2 Bore	D	L	L1	M	额定扭矩 Rated Torque (N.m)	最大扭矩 Max. Torque (N.m)	偏心误差 eccentricity error (m.m)	轴角偏角 Shaft angel	最高转速 Max. Rotational (rpm)	运转 Rated
BB	5-12	5-12	23	32	3	M3	2N.m	4N.m	±0.5mm	2°	8800	同步运转 In-phase operate
BB	5-18	5-18	38	50	5	M4	6N.m	12N.m	±0.5mm	2°	7200	同步运转 In-phase operate

(定货范例 ordering example) BB-15x15-D38L50

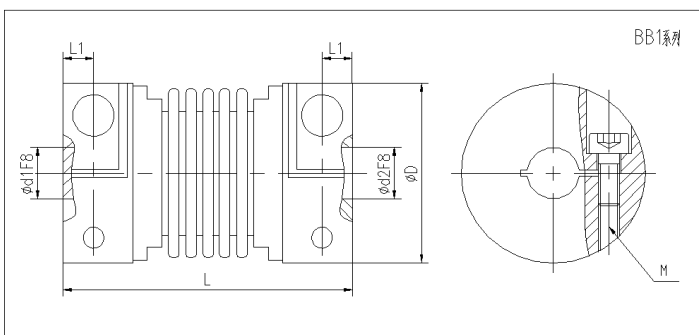
(用户端孔径 bore size on user's end) d1 \_\_\_\_\_ (联轴器总长 total length of the coupling) L  
(用户端孔径 bore size on user's end) d2 \_\_\_\_\_ (联轴器最大外径 Max. housing diameter of couling) D

滚珠  
丝杠  
系列

直线  
导轨  
系列

支撑座  
系列

**BB1系列 弹性联轴器**  
BB1Series flexible coupling



BB1系列轴套材料为：硬质铝合金  
中间体材料为：全不锈钢波纹管

Body material : Hard Aluminum alloy  
Sleeve matenal : Stainless steelbellows

项目类型 Item type	d1 Bore	d2 Bore	D	L	L1	M	额定扭矩 Rated Torque (N.m)	最大扭矩 Max. Torque (N.m)	偏心误差 eccentricity error (m.m)	轴角偏角 Shaft angel	最高转速 Max. Rotational (rpm)	运转 Rated
BB1	14-22	14-22	50	70	6.8	M6	3.5N.m	70N.m	±0.25mm	2.5°	4800	
BB1	15-26	15-26	60	71	6.8	M6	5.5N.m	110N.m	±0.25mm	2.5°	3500	同步运转 In-phase operate
BB1	15-26	15-26	60	81	6.8	M6	5.5N.m	110N.m	±0.25mm	2.5°	3500	
BB1	15-26	15-26	60	91	6.8	M6	5.5N.m	110N.m	±0.25mm	2.5°	3500	

(定货范例 ordering example) BB1-15x15-D50L70

(用户端孔径 bore size on user's end) d1 \_\_\_\_\_ (联轴器总长 total length of the coupling) L  
(用户端孔径 bore size on user's end) d2 \_\_\_\_\_ (联轴器最大外径 Max. housing diameter of couling) D

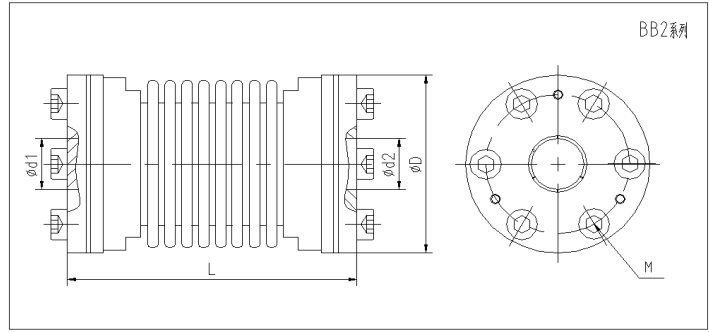
联轴器  
系列

直线  
轴承  
系列

铝  
制  
箱

直线  
光轴  
系列

## BB2系列 弹性联轴器 BB2Series flexible coupling



BB2系列轴套材料为：硬质铝合金  
中间体材料为：全不锈钢波纹管

Body material : Hard Aluminum alloy  
Sleeve material : Stainless steelbellows

项目类型 Item type	d1 Bore	d2 Bore	D	L	M	额定扭矩 Rated Torque (N.m)	最大扭矩 Max. Torque (N.m)	偏心误差 eccentricity error (m.m)	轴角/偏角 Shaft angel	最高转速 Max. Rotational (rpm)	运转 Rated
BB2	15-26	15-26	60	110	M5	55N.m	110N.m	±0.25mm	1°	7200	
BB2	15-26	15-26	60	118	M5	55N.m	110N.m	±0.25mm	1°	7200	同步运转 In-phase operate
BB2	20-40	20-40	80	110	M6	80N.m	140N.m	±0.25mm	1°	7200	
BB2	20-40	20-40	80	128	M6	80N.m	140N.m	±0.25mm	1°	7200	

(定货范例 ordering example) BB2-18x18-D60L110

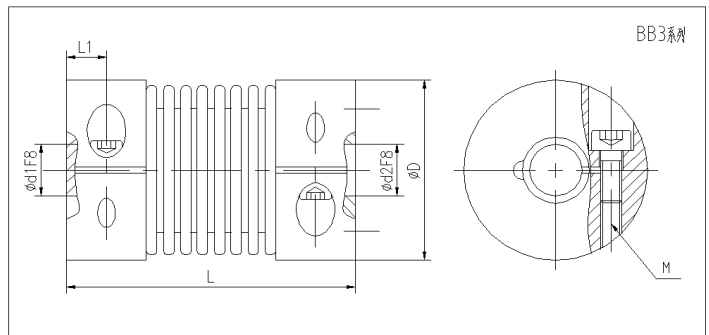
(用户端孔径 bore size on user's end) d1

(联轴器总长 total length of the coupling) L

(用户端孔径 bore size on user's end) d2

(联轴器最大外径 Max. housing diameter of coupling) D

## BB3系列 弹性联轴器 BB3Series flexible coupling



BB3系列轴套材料为：硬质铝合金  
中间体材料为：全不锈钢波纹管

Body material : Hard Aluminum alloy  
Sleeve material : Stainless steelbellows

项目类型 Item type	d1 Bore	d2 Bore	D	L	L1	M	额定扭矩 Rated Torque (N.m)	最大扭矩 Max. Torque (N.m)	偏心误差 eccentricity error (m.m)	轴角/偏角 Shaft angel	最高转速 Max. Rotational (rpm)	运转 Rated
BF1	15-25	15-25	57	60	7.5	M6	3.5N.m	70N.m	±0.5mm	2.5°	4800	同步运转 In-phase operate
BF1	18-30	18-30	72	75	7.5	M6	5.5N.m	70N.m	±0.5mm	2.5°	3500	

(定货范例 ordering example) BB3-15x15-D57L60

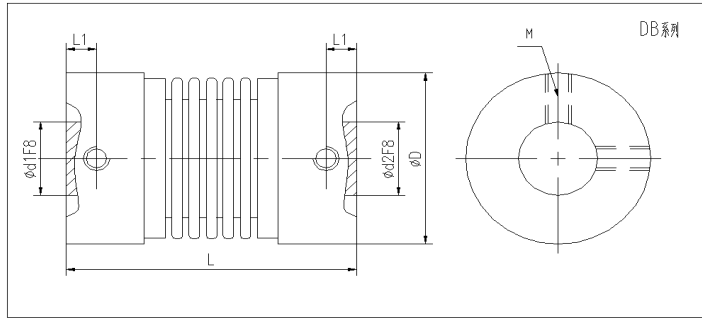
(用户端孔径 bore size on user's end) d1

(联轴器总长 total length of the coupling) L

(用户端孔径 bore size on user's end) d2

(联轴器最大外径 Max. housing diameter of coupling) D

DB 系列 弹性联轴器  
DB Series flexible coupling



DB系列轴套材料为：硬质铝合金  
中间体材料为：全不锈钢波纹管

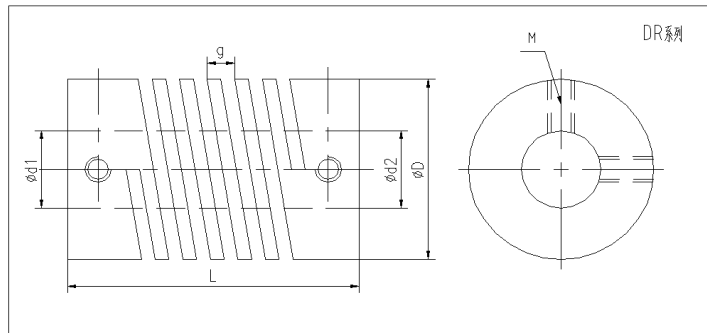
Body material: Hard Aluminum alloy  
Sleeve material: Stainless steel bellows

项目类型 Item type	d1 Bore	d2 Bore	D	L	L1	M	额定扭矩 Rated Torque (N.m)	最大扭矩 Max. Torque (N.m)	偏心误差 eccentricity error (m.m)	轴角偏角 Shaft angle	最高转速 Max. Rotational (rpm)	运转 Rated
DB	4-10	4-10	20	27	3.5	M4	2N.m	4N.m	±0.25mm	2°	20000	
DB	4-12	4-12	20	30	3.5	M4	2N.m	4N.m	±0.25mm	2°	20000	同步运转 In-phase operate
DB	5-14	5-14	23	32	4.5	M4	2N.m	4N.m	±0.25mm	2°	10000	
DB	5-22	5-22	38	50	5	M5	6N.m	12N.m	±0.25mm	2°	10000	

(定货范例 ordering example) DB-15x15-D38L60

(用户端孔径 bore size on user's end) d1 ———— (联轴器总长 total length of the coupling) L  
(用户端孔径 bore size on user's end) d2 ———— (联轴器最大外径 Max. housing diameter of coupling) D

DR 系列 弹性联轴器  
DR Series flexible coupling



DR系列轴套材料为：铝合金  
(特殊孔径和键槽均可按需求加工)

Body material: Aluminum alloy  
(Special bore size and slot available on request)

项目类型 Item type	d1 Bore	d2 Bore	D	L	g	M	额定扭矩 Rated Torque (N.m)	最大扭矩 Max. Torque (N.m)	偏心误差 eccentricity error (m.m)	轴角偏角 Shaft angle	最高转速 Max. Rotational (rpm)	运转 Rated
DR	4-8	4-8	15	20-30	2.5	M3	1N.m	2N.m	±0.2mm	2°	8900	
DR	4-10	4-10	18	20-35	2.5	M3	1N.m	2N.m	±0.2mm	2°	8900	
DR	4-12	4-12	20	25-35	2.5	M4	1N.m	2N.m	±0.2mm	2°	8900	同步运转 In-phase operate
DR	4-15	4-15	25	25-40	2.5	M4	1.5N.m	3N.m	±0.2mm	2°	7600	
DR	5-18	5-18	30	30-45	2.5	M4	1.5N.m	3N.m	±0.2mm	2°	7600	
DR	5-20	5-20	35	30-45	2.5	M5	2N.m	4N.m	±0.2mm	2°	7600	

(定货范例 ordering example) DR-15x15-D30L45

(用户端孔径 bore size on user's end) d1 ———— (联轴器总长 total length of the coupling) L  
(用户端孔径 bore size on user's end) d2 ———— (联轴器最大外径 Max. housing diameter of coupling) D

滚珠  
丝杠  
系列

直线  
导轨  
系列

支撑座  
系列

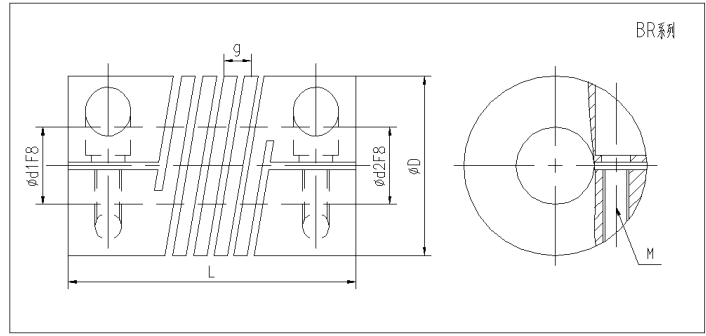
联轴器  
系列

直线  
轴承  
系列

铝  
制  
箱

直线  
光轴  
系列

## BR 系列 弹性联轴器 BR Series flexible coupling



BR系列轴套材料为：铝合金  
(特殊孔径和键槽均可按需求加工)

Body material: Aluminum alloy  
Special bore size and slot available on request

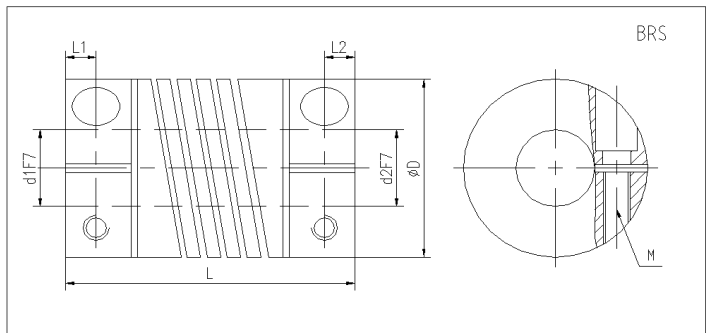
项目类型 Item type	d1 Bore	d2 Bore	D	L	g	M	额定扭矩 Rated Torque (N.m)	最大扭矩 Max. Torque (N.m)	偏心误差 eccentricity error (m.m)	轴角偏角 Shaft angel	最高转速 Max. Rotational (rpm)	运转 Rated
BR	4-6.35	4-6.35	20	25-35	2.5-3	M3	0.5N.m	1N.m	±0.2mm	2°	8500	
BR	5-8	5-8	22	25-35	2.5-3	M3	0.5N.m	1N.m	±0.2mm	2°	8500	
BR	5-10	5-10	25	25-35	2.5-3	M3	1.2N.m	2.4N.m	±0.2mm	2°	6200	同步运转 In-phase operate
BR	5-12	5-12	28	25-40	2.5-3	M3	1.6N.m	3.2N.m	±0.2mm	2°	6000	
BR	5-14	5-14	35	30-45	2.5-3	M4	4.2N.m	8.4N.m	±0.2mm	2°	5000	
BR	5-18	5-18	38	30-45	2.5-3	M4	4.5N.m	9N.m	±0.2mm	2°	5000	

(定货范例 ordering example) BR-15x15-D35L40

(用户端孔径 bore size on user's end) d1  
(用户端孔径 bore size on user's end) d2

(联轴器总长 total length of the coupling) L  
(联轴器最大外径 Max. housing diameter of coupling) D

## BRS系列 弹性联轴器 BRSSeries flexible coupling



BRS系列轴套材料为：铝合金  
(特殊孔径和键槽均可按需求加工)

Body material: Aluminum alloy  
(Special bore size and slot available on request)

项目类型 Item type	d1 Bore	d2 Bore	D	L	g	M	额定扭矩 Rated Torque (N.m)	最大扭矩 Max. Torque (N.m)	偏心误差 eccentricity error (m.m)	轴角偏角 Shaft angel	最高转速 Max. Rotational (rpm)	扭紧 力矩
BRS	5-12	5-12	28	25-40	2.5-3	M3	2N.m	4N.m	±0.1mm	2°	9500	1.5
BRS	5-14	5-14	35	30-45	2.5-3	M4	4.5N.m	9N.m	±0.1mm	2°	9000	3.2
BRS	5-18	5-18	38	30-45	2.5-3	M4	4.8N.m	9.6N.m	±0.1mm	2°	9000	3.2

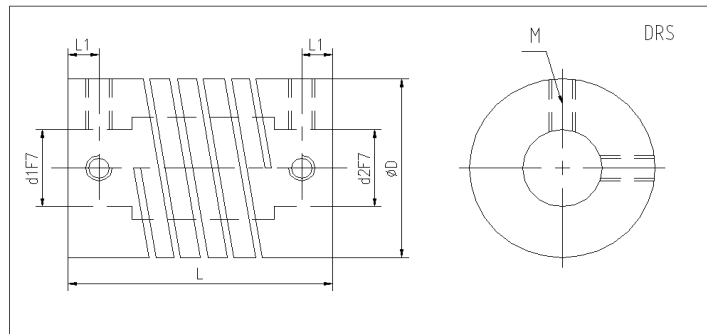
(定货范例 ordering example) BRS-15x15-D35L40

(用户端孔径 bore size on user's end) d1  
(用户端孔径 bore size on user's end) d2

(联轴器总长 total length of the coupling) L  
(联轴器最大外径 Max. housing diameter of coupling) D



DRS系列 弹性联轴器  
DRS Series flexible coupling



DRS系列轴套材料为：铝合金  
(特殊孔径和键槽均可按需求加工)

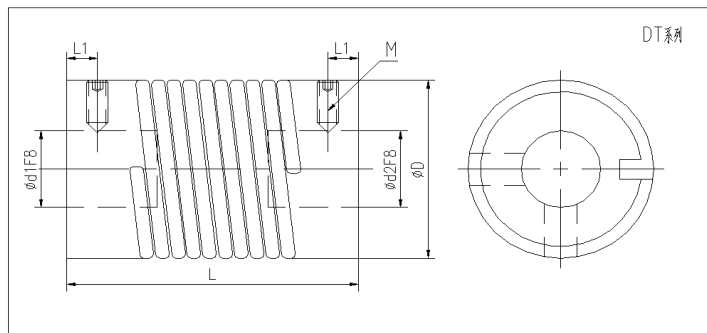
Body material: Aluminum alloy  
(Special bore size and slot available on request)

项目类型 Item type	d1 Bore	d2 Bore	D	L	g	M	额定扭矩 Rated Torque (N.m)	最大扭矩 Max. Torque (N.m)	偏心误差 eccentricity error (m.m)	轴角 Shaft angel	最高转速 Max. Rotational (rpm)	扭紧力矩
DRS	5-12	5-12	28	25-40	2.5-3	M3	2N.m	4N.m	±0.1mm	2°	9500	1.5
DRS	5-14	5-14	35	30-45	2.5-3	M4	4.5N.m	9N.m	±0.1mm	2°	9000	3.2
DRS	5-18	5-18	38	30-45	2.5-3	M4	4.8N.m	9.6N.m	±0.1mm	2°	9000	3.2

(定货范例 ordering example) DRS-15x15-D35L40

(用户端孔径 bore size on user's end) d1 \_\_\_\_\_ (联轴器总长 total length of the coupling) L  
(用户端孔径 bore size on user's end) d2 \_\_\_\_\_ (联轴器最大外径 Max. housing diameter of coupling) D

DT 系列 弹性联轴器  
DT Series flexible coupling



DT系列轴套材料为：硬质铝合金  
中间体材料：弹簧钢 (D26可提供方钢2X3)  
(特殊孔径和键槽均可按需求加工)

Body material: Hard Aluminum alloy  
Sleeve material: Spring steel  
(Special bore size and slot available on request)

项目类型 Item type	d1 Bore	d2 Bore	D	L	L1	M	额定扭矩 Rated Torque (N.m)	最大扭矩 Max. Torque (N.m)	偏心误差 eccentricity error (m.m)	轴角 Shaft angel	最高转速 Max. Rotational (rpm)	扭紧力矩
DT	4-10	4-10	18	25-30	3-5	M3	1N.m	2N.m	±0.5mm	0.5°	8000	同步运转 In-phase operate
DT	4-12	4-12	20	25-35	3-5	M3	1N.m	2N.m	±0.5mm	0.5°	8000	
DT	5-14	5-14	26	46-50	4-5	M4	1.5N.m	3N.m	±0.5mm	0.5°	8000	

(定货范例 ordering example) DT-12x12-D26L46

(用户端孔径 bore size on user's end) d1 \_\_\_\_\_ (联轴器总长 total length of the coupling) L  
(用户端孔径 bore size on user's end) d2 \_\_\_\_\_ (联轴器最大外径 Max. housing diameter of coupling) D

滚珠  
丝杠  
系列

直线  
导轨  
系列

支撑座  
系列

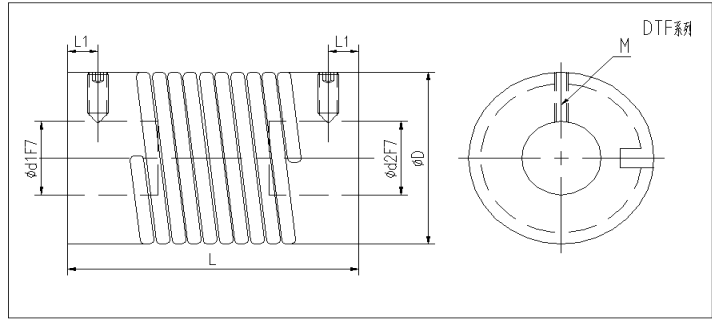
联轴器  
系列

直线  
轴承  
系列

铝  
制  
箱

直线  
光轴  
系列

**DTF系列 弹性联轴器**  
DTF Series flexible coupling



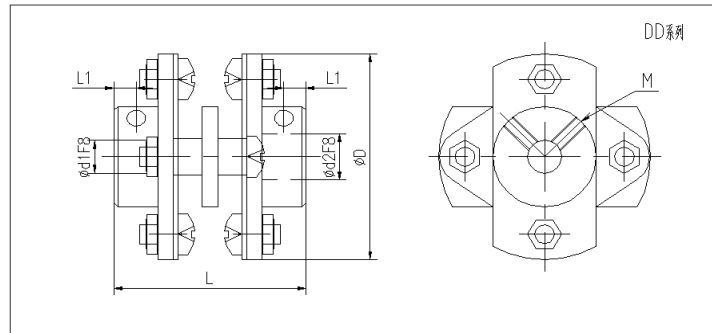
DTF系列轴套材料为：锌合金  
中间链接材料为：弹簧方钢

项目类型 Item type	d1 Bore	d2 Bore	D	L	M	额定扭矩 Rated Torque (N.m)	最大扭矩 Max. Torque (N.m)	偏心误差 eccentricity error (m.m)	轴角偏角 Shaft angel	最高转速 Max. Rotational (rpm)	扭紧 力矩
DTF	4-18	4-8	18	30	M4	0.5N.m	1N.m	±0.2mm	3°	3000	1.5
DTF	4-12	4-12	20	35	M4	1N.m	2N.m	±0.2mm	3°	3000	1.5
DTF	5-14	5-14	26	50	M5	1.5N.m	3N.m	±0.2mm	3°	3000	2

(定货范例 ordering example) DTF-12x12-D26L50

(用户端孔径 bore size on user's end) d1 ———— (联轴器总长 total length of the coupling) L  
(用户端孔径 bore size on user's end) d2 ———— (联轴器最大外径 Max. housing diameter of coupling) D

**DD 系列 弹性联轴器**  
DD Series flexible coupling



DD系列轴套材料为：硬质铝合金  
中间链接材料：不锈钢弹片  
(特殊孔径和键槽均可按需求加工)

Body material: Hard Aluminum alloy  
Sleeve material: Stainless steel spring  
(Special bore size and slot available on request)

项目类型 Item type	d1 Bore	d2 Bore	D	L	L1	M	额定扭矩 Rated Torque (N.m)	最大扭矩 Max. Torque (N.m)	偏心误差 eccentricity error (m.m)	轴角偏角 Shaft angel	最高转速 Max. Rotational (rpm)	运转 Rated
DD	4-12	4-12	32	29	3.5	M4	3N.m	6N.m	±0.2mm	1.5°	12000	
DD	4-12	4-12	32	30	3.5	M4	3N.m	6N.m	±0.2mm	1.5°	12000	
DD	4-12	4-12	32	40	3.5	M4	3N.m	6N.m	±0.2mm	1.5°	12000	同步运转 In-phase operate
DD	4-14	4-14	34	35	3.5	M5	4N.m	8N.m	±0.2mm	1.5°	12000	
DD	4-18	4-18	42	38	3.5	M5	4N.m	10N.m	±0.2mm	1.5°	12000	

(定货范例 ordering example) DD-8 x8-D32L29

(用户端孔径 bore size on user's end) d1 ———— (联轴器总长 total length of the coupling) L  
(用户端孔径 bore size on user's end) d2 ———— (联轴器最大外径 Max. housing diameter of coupling) D

滚珠丝杠系列

直线导轨系列

支撑座系列

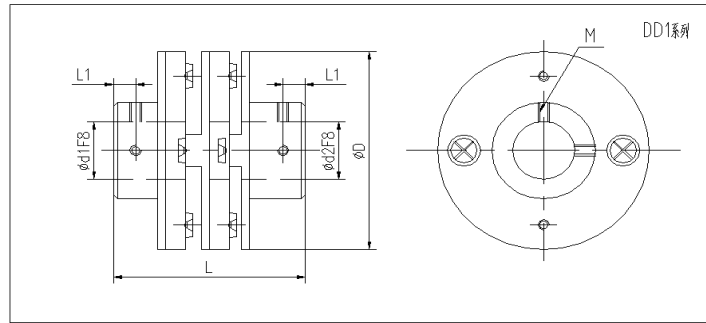
联轴器系列

直线轴承系列

铝制箱

直线光轴系列

DD1系列 弹性联轴器  
DD1 Series flexible coupling



DD1系列轴套材料为：硬质铝合金  
中间体材料：不锈钢弹片  
(特殊孔径和键槽均可按需求加工)

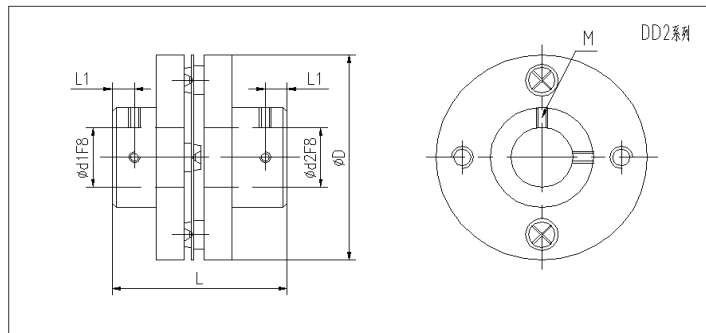
Body material:Hard Aluminum alloy  
Sleeve material:Stainless steel  
(Special bore size and slot available on request)

项目类型 Item type	d1 Bore	d2 Bore	D	L	L1	M	额定扭矩 Rated Torque (N.m)	最大扭矩 Max. Torque (N.m)	偏心误差 eccentricity error (m.m)	轴角偏角 Shaft angel	最高转速 Max. Rotational (rpm)	运转 Rated
DD1	4-12	4-12	34	33	5	M4	5N.m	10N.m	±0.2mm	1.5°	11000	同步运转 In-phase operate
DD1	4-16	4-16	42	40	5	M4	5N.m	10N.m	±0.2mm	1.5°	8000	
DD1	10-25	10-25	60	58	7	M6	6N.m	12N.m	±0.2mm	1.5°	8000	

(定货范例 ordering example) DD1-15x15-D42L40

(用户端孔径 bore size on user's end) d1 ———— (联轴器总长 total length of the coupling) L  
(用户端孔径 bore size on user's end) d2 ———— (联轴器最大外径 Max. housing diameter of coupling) D

DD2系列 弹性联轴器  
DD2Series flexible coupling



DD2系列轴套材料为：硬质铝合金  
中间体材料为：不锈钢弹片  
(特殊孔径和键槽均可按需求加工)

Body material:Hard Aluminum alloy  
Sleeve material:Stainless steel spring  
(Special bore size and slot available on request)

项目类型 Item type	d1 Bore	d2 Bore	D	L	L1	M	额定扭矩 Rated Torque (N.m)	最大扭矩 Max. Torque (N.m)	偏心误差 eccentricity error (m.m)	轴角偏角 Shaft angel	最高转速 Max. Rotational (rpm)	扭紧 力矩
DD2	4-15	4-15	45	30	5	M3	5N.m	10N.m	±0.2mm	1.5°	11000	同步运转 In-phase operate
DD2	5-20	5-20	57	40	6	M4	24N.m	48N.m	±0.2mm	1.5°	8000	
DD2	5-23	8-23	60	45	7	M5	30N.m	60N.m	±0.2mm	1.5°	8000	

(定货范例 ordering example) DD2-15x15-D45L30

(用户端孔径 bore size on user's end) d1 ———— (联轴器总长 total length of the coupling) L  
(用户端孔径 bore size on user's end) d2 ———— (联轴器最大外径 Max. housing diameter of coupling) D

滚珠  
丝杠  
系列

直线  
导轨  
系列

支撑座  
系列

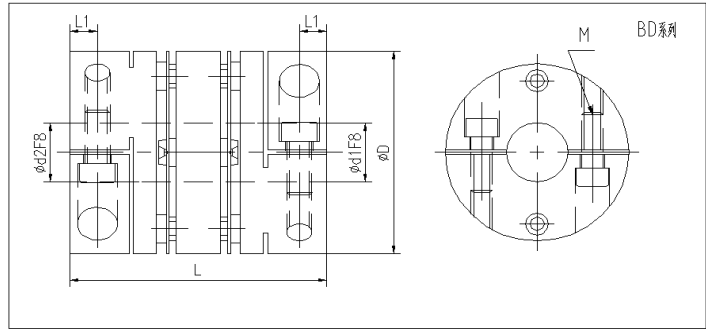
联轴器  
系列

直线  
轴承  
系列

铝  
制  
箱

直线  
光轴  
系列

**BD 系列 弹性联轴器**  
BD Series flexible coupling



BD系列轴套材料为：硬质铝合金  
中间体材料为：不锈钢弹片  
(特殊孔径和键槽均可按需求加工)

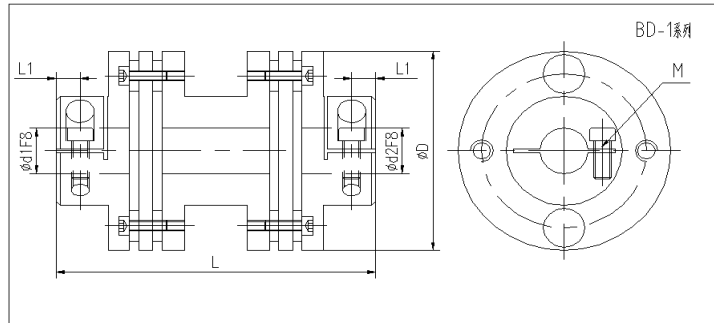
Body material:Hard Aluminum alloy  
Sleeve material:Stainless steel spring  
(Special bore size and slot available on request)

项目类型 Item type	d1 Bore	d2 Bore	D	L	L1	M	额定扭矩 Rated Torque (N.m)	最大扭矩 Max. Torque (N.m)	偏心误差 eccentricity error (m.m)	轴角偏角 Shaft angel	最高转速 Max. Rotational (rpm)	运转 Rated
BD	4-12	4-12	26	33	3	M2.5	8N.m	16N.m	±0.2mm	2.5°	12000	
BD	5-20	5-20	42	48	5.5	M4	12N.m	20N.m	±0.2mm	2.5°	12000	
BD	10-25	10-25	60	70	7.5	M5	15N.m	30N.m	±0.2mm	2.5°	12000	同步运转 In-phase operate
BD	10-25	10-25	60	88	7.5	M5	30N.m	60N.m	±0.2mm	2.5°	12000	
BD	12-35	12-35	84	98	10.5	M8	80N.m	160N.m	±0.2mm	2.5°	12000	

(定货范例 ordering example) BD-15x15-D60L70



**BD-1系列 弹性联轴器**  
BD-1 Series flexible coupling



BD-1系列轴套材料为：硬质铝合金  
中间体材料为：不锈钢弹片  
(特殊孔径和键槽均可按需求加工)

Body material:Hard Aluminum alloy  
Material:Stainless steel spring  
(Special bore size and slot available on request)

项目类型 Item type	d1 Bore	d2 Bore	D	L	L1	M	额定扭矩 Rated Torque (N.m)	最大扭矩 Max. Torque (N.m)	偏心误差 eccentricity error (m.m)	轴角偏角 Shaft angel	最高转速 Max. Rotational (rpm)	扭紧 力矩
BD-1	4-10	4-10	35	50	4	M3	8N.m	16N.m	±0.2mm	2.5°	9000	
BD-1	5-14	5-14	48	64	5	M4	10N.m	20N.m	±0.2mm	2.5°	9000	同步运转 In-phase operate
BD-1	6-16	6-16	55	70	6	M5	22N.m	44N.m	±0.2mm	2.5°	9000	

(定货范例 ordering example) BD-1-15x15-D48L64



滚珠丝杠系列

直线导轨系列

支撑座系列

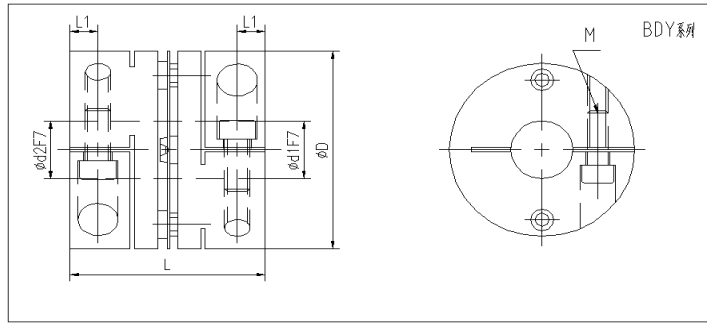
联轴器系列

直线轴承系列

铝制箱

直线光轴系列

**BDY系列 弹性联轴器**  
BDY Series flexible coupling



BDY系列轴套材料为：硬质铝合金  
中间体材料：不锈钢弹片  
(特殊孔径和键槽均可按需求加工)

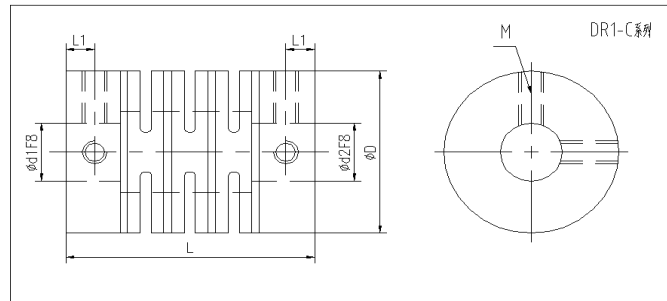
Body material: Hard Aluminum alloy  
Sleeve material: Stainless steel  
(Special bore size and slot available on request)

项目类型 Item type	d1 Bore	d2 Bore	D	L	L1	M	额定扭矩 Rated Torque (N.m)	最大扭矩 Max. Torque (N.m)	偏心误差 eccentricity error (m.m)	轴角偏角 Shaft angel	最高转速 Max. Rotational (rpm)	扭紧力矩
BDY	5-10	5-10	26	25.5	11.5	M3	8N.m	16N.m	±0.2mm	1°	10000	1.5
BDY	8-14	8-14	34	31.3	14.1	M4	10N.m	16N.m	±0.2mm	1°	10000	1.5
BDY	10-16	10-16	38	34.1	15	M4	12N.m	20N.m	±0.2mm	1°	10000	2.5
BDY	11-18	11-18	42	34.5	15	M4	18N.m	30N.m	±0.2mm	1°	10000	2.5
BDY	14-24	14-24	55	45	20	M5	25N.m	50N.m	±0.2mm	1°	10000	7.0
BDY	15-26	15-26	60	50	23	M6	46N.m	92N.m	±0.2mm	1°	10000	12
BDY	19-35	19-35	68	54	24	M6	55N.m	110N.m	±0.2mm	1°	10000	12
BDY	24-40	24-40	82	68	30	M6	80N.m	160N.m	±0.2mm	1°	10000	16

(定货范例 ordering example) BDY-15x15-D26L25.5

(用户端孔径 bore size on user's end) d1 \_\_\_\_\_ (联轴器总长 total length of the coupling) L  
(用户端孔径 bore size on user's end) d2 \_\_\_\_\_ (联轴器最大外径 Max. housing diameter of coupling) D

**DR1-C系列 弹性联轴器**  
DR1-C Series flexible coupling



DR1-C系列轴套材料为：不锈钢  
(特殊孔径和键槽均可按需求加工)

Body material: Stainless steel  
(Special bore size and slot available on request)

项目类型 Item type	d1 Bore	d2 Bore	D	L	L1	M	额定扭矩 Rated Torque (N.m)	最大扭矩 Max. Torque (N.m)	偏心误差 eccentricity error (m.m)	轴角偏角 Shaft angel	最高转速 Max. Rotational (rpm)	运转 Rated
DR1-C	4-12	4-12	20	25-35	5	M4	1.5N.m	3N.m	±0.2mm	1.5°	10000	
DR1-C	5-14	5-14	25	25-35	5	M4	3N.m	6N.m	±0.2mm	1.5°	9000	同步运转
DR1-C	5-16	5-16	30	30-35	6	M4	5N.m	10N.m	±0.2mm	1.5°	9000	In-phase operate
DR1-C	15-25	15-25	35	30-40	7	M5	7N.m	14N.m	±0.2mm	1.5°	8000	

(定货范例 ordering example) DR1-C-15x15-D30L35

(用户端孔径 bore size on user's end) d1 \_\_\_\_\_ (联轴器总长 total length of the coupling) L  
(用户端孔径 bore size on user's end) d2 \_\_\_\_\_ (联轴器最大外径 Max. housing diameter of coupling) D

滚珠丝杠系列

直线导轨系列

支撑座系列

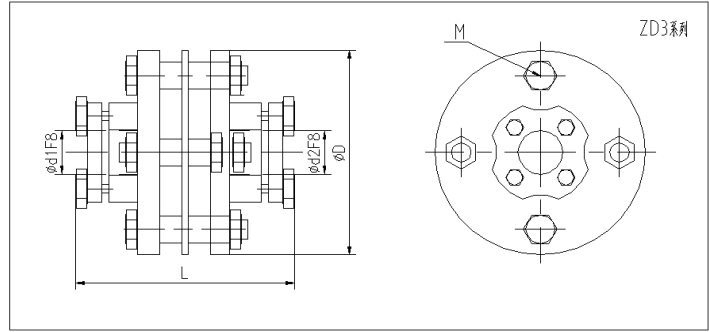
联轴器系列

直线轴承系列

铝制箱

直线光轴系列

## ZD3 系列 弹性联轴器 ZD3 Series flexible coupling



ZD3系列轴套材料为：45#铜  
中间体材料为：不锈钢弹片

Body material : #45 steel  
Sleeve material:Stainless steel spring

项目类型 Item type	d1 Bore	d2 Bore	D	L	M	额定扭矩 Rated Torque (N.m)	最大扭矩 Max. Torque (N.m)	偏心误差 eccentricity error (m.m)	轴角偏角 Shaft angel	最高转速 Max. Rotational (rpm)	运转 Rated
ZD3	11-22	11-22	68	90	M5	60N.m	120N.m	±0.15mm	1°	4600	
ZD3	14-30	14-30	82	95	M6	80N.m	160N.m	±0.15mm	1°	4600	
ZD3	19-35	19-35	94	110	M6	150N.m	300N.m	±0.15mm	1°	4500	同步运转 In-phase operate
ZD3	24-40	24-40	104	124	M6	225N.m	450N.m	±0.15mm	1°	4500	
ZD3	30-50	30-35	126	152	M8	360N.m	720N.m	±0.15mm	1°	4200	
ZD3	35-58	30-58	144	170	M8	500N.m	1000N.m	±0.15mm	1°	4200	

(定货范例 ordering example) ZD3-18x18-D68L90

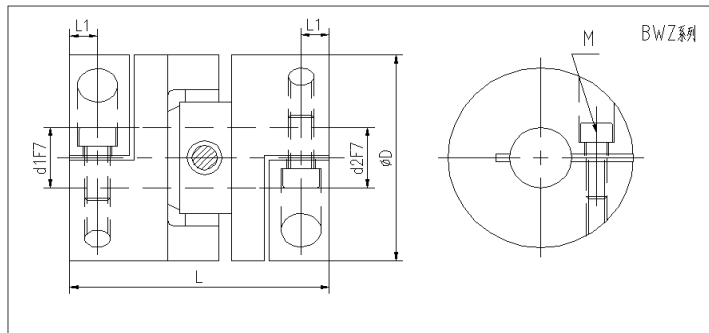
(用户端孔径 bore size on user's end) d1

(联轴器总长 total length of the coupling) L

(用户端孔径 bore size on user's end) d2

(联轴器最大外径 Max. housing diameter of coupling) D

## BWZ 系列 弹性联轴器 BWZ Series flexible coupling



BWZ系列轴套材料为：铝合金

Body material:Aluminum alloy

中间体材料为：不锈钢

Material:Stainless steel

(特殊孔径和键槽均可按需求加工)

(Special bore size and slot available on request)

项目类型 Item type	d1 Bore	d2 Bore	D	L	M	额定扭矩 Rated Torque (N.m)	最大扭矩 Max. Torque (N.m)	偏心误差 eccentricity error (m.m)	轴角偏角 Shaft angel	最高转速 Max. Rotational (rpm)	扭紧 力矩
BWZ	5-12	5-12	25	34	M3	2N.m	5N.m	±0.2mm	1°	25000	1.5
BWZ	6-14	6-14	30	42	M4	4N.m	6N.m	±0.2mm	1°	21000	3.4
BWZ	8-16	8-16	35	52	M4	4N.m	8N.m	±0.2mm	1°	18000	3.4
BWZ	8-20	8-20	40	66	M5	10N.m	20N.m	±0.2mm	1°	15000	7.0
BWZ	10-24	10-24	50	70	M6	35N.m	70N.m	±0.2mm	1°	15000	8.0
BWZ	10-28	10-28	60	90	M6	95N.m	190N.m	±0.2mm	1°	15000	12

(定货范例 ordering example) BD-1-15x15-D35L40

(用户端孔径 bore size on user's end) d1

(联轴器总长 total length of the coupling) L

(用户端孔径 bore size on user's end) d2

(联轴器最大外径 Max. housing diameter of coupling) D

滚珠丝杠系列

直线导轨系列

支撑座系列

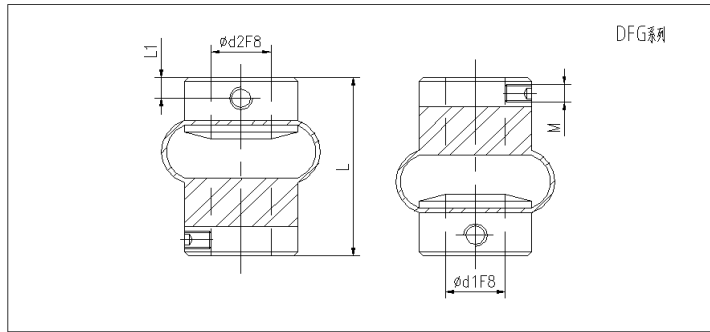
联轴器系列

直线轴承系列

铝制箱

直线光轴系列

**DFG系列 弹性联轴器**  
DFG Series flexible coupling



DFG系列轴套材料为：硬质铝合金  
中间体材料为：聚胺脂弹性片  
(特殊孔径和键槽均可按需求加工)

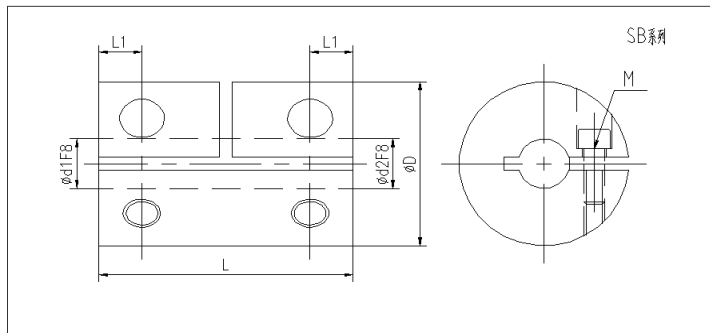
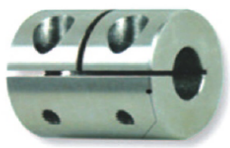
Body material: Hard Aluminum alloy  
Sleebe material: polyurethane spring  
(Special bore size and slot available on request)

项目类型 Item type	d1 Bore	d2 Bore	D	L	L1	M	额定扭矩 Rated Torque (N.m)	最大扭矩 Max. Torque (N.m)	偏心误差 eccentricity error (m.m)	轴角偏角 Shaft angel	最高转速 Max. Rotational (rpm)	扭紧 力矩
DFG	4-8	4-8	17	28	3	M3	0.6N.m	1.2N.m	±0.5mm	15°	8000	
DFG	4-8	4-8	20	31	3	M3	0.8N.m	1.6N.m	±0.5mm	15°	8000	同步运转 In-phase operate
DFG	5-12	5-12	23	36	3	M3	1N.m	1.8N.m	±1.5mm	15°	8000	

(定货范例 ordering example) DFG-15x15-D30L40

(用户端孔径 bore size on user's end) d1 \_\_\_\_\_ (联轴器总长 total length of the coupling) L  
(用户端孔径 bore size on user's end) d2 \_\_\_\_\_ (联轴器最大外径 Max. housing diameter of coupling) D

**SB 系列 弹性联轴器**  
SB Series flexible coupling



SB系列轴套材料为：硬质铝合金  
(特殊孔径和键槽均可按需求加工)

Body material: Hard Aluminum alloy  
(Special bore size and slot available on request)

项目类型 Item type	d1 Bore	d2 Bore	D	L	L1	M	额定扭矩 Rated Torque (N.m)	最大扭矩 Max. Torque (N.m)	偏心误差 eccentricity error (m.m)	轴角偏角 Shaft angel	最高转速 Max. Rotational (rpm)	运转 Rated
SB	4-6	4-6	16	24	6	M3	1.5N.m	3N.m	±0.1mm	1°	9200	
SB	5-12	5-12	20	30	7	M3	1.5N.m	3N.m	±0.1mm	1°	8500	同步运转 In-phase operate
SB	5-12	5-12	25	36	9	M3	2N.m	4N.m	±0.1mm	1°	7000	
SB	6-16	6-16	32	42	10	M4	3N.m	6N.m	±0.1mm	1°	6000	

(定货范例 ordering example) SB-12x12-D32L42

(用户端孔径 bore size on user's end) d1 \_\_\_\_\_ (联轴器总长 total length of the coupling) L  
(用户端孔径 bore size on user's end) d2 \_\_\_\_\_ (联轴器最大外径 Max. housing diameter of coupling) D

滚珠  
丝杠  
系列

直线  
导轨  
系列

支撑座  
系列

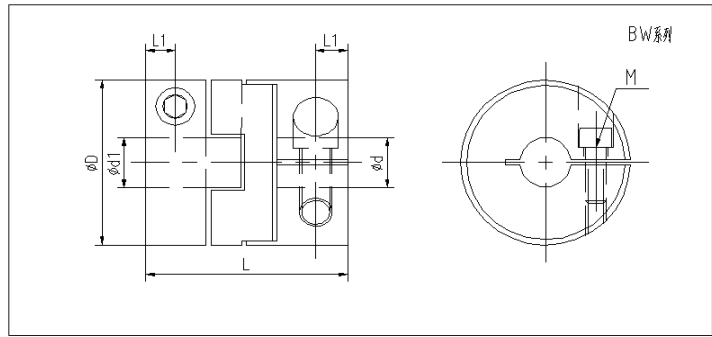
联轴器  
系列

直线  
轴承  
系列

铝  
制  
箱

直线  
光轴  
系列

**BW 系列 弹性联轴器**  
**BW Series flexible coupling**



BW系列轴套材料为：铝合金  
 中间体材料为：聚甲醛

Body material: Aluminum alloy  
 Sleeve material: polyoxymethylene

项目类型 Item type	d1 Bore	d2 Bore	D	L	L1	M	额定扭矩 Rated Torque (N.m)	最大扭矩 Max. Torque (N.m)	偏心误差 eccentricity error (m.m)	轴角偏角 Shaft angel	最高转速 Max. Rotational (rpm)	扭紧力矩
DFG	4-6	4-6	20	22	3	M2.5-3	1.5N.m	3N.m	±0.2mm	1°	4500	
DFG	5-8	5-8	25	27	4	M3-4	2N.m	4N.m	±0.2mm	1°	3500	同步运载 In-phase operate
DFG	5-12	5-12	32	35	4.5	M3-4	3N.m	6N.m	±0.2mm	1°	3000	

(定货范例 ordering example) BW-10x10-D32L35

(用户端孔径 bore size on user's end) d1 \_\_\_\_\_  
 (用户端孔径 bore size on user's end) d2 \_\_\_\_\_

(联轴器总长 total length of the coupling) L \_\_\_\_\_  
 (联轴器最大外径 Max. housing diameter of coupling) D \_\_\_\_\_

滚珠丝杠系列

直线导轨系列

支撑座系列

联轴器系列

直线轴承系列

铝制箱

直线光轴系列